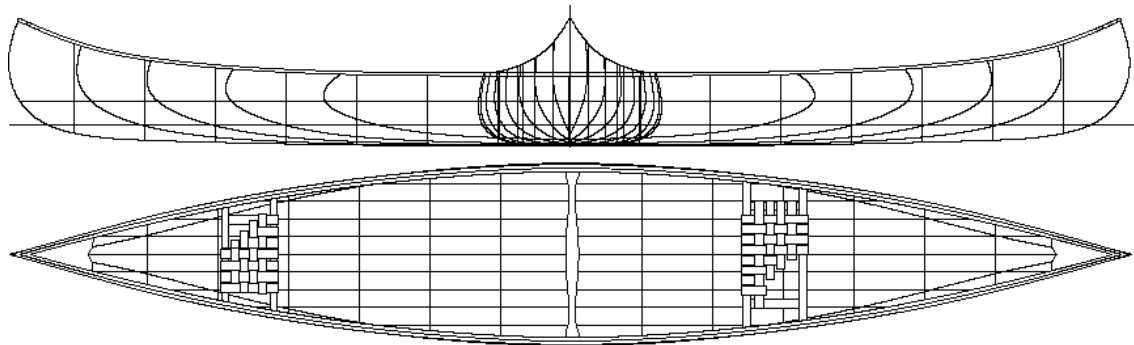


DESIGN BASED ON A 15'9" 'CANADIAN' BUILT BY THE PETERBOROUGH CANOE CO.

## SPECIFICATIONS

- Length 16'
- Maximum beam 31.5"
- Beam waterline 30.3"
- Beam gunnel 30"
- Bow height 22"
- Centre depth 12.5"
- Draft 4"
- Displacement 350 lbs.
- Wetted surface 25.2 S.F.
- Weight to immerse 94 lb/in
- Prismatic coefficient 0.525
- Weight 45 to 55 lbs.

## 16' Canadien 'The Cottager's Canoe'



A 'Peterborough' canoe often referred to any open canoe, but this design comes from the company that made the town's name famous around the world. A direct descendant of the first "planked dugout" created by John Stephenson 140 years ago, it is thought to be the 'Canadien' model built in the original cedar strip technique. Its narrow beam and shallow arch hull make it ideal for general-purpose paddling and light tripping. Keeled, with a slightly rockered keel-line, it is responsive and easy to paddle. This favourite of the lake district has justifiably been dubbed 'the cottager's canoe'.

© The Bear Mountain Boat Shop 1993  
Lines take by Ted Moores, 1981  
Drawn by Ted Moores, Aug. 1993  
Redrawn by Steve Killing, 1999

PROFESSIONAL PLANS FOR THE CASUAL BUILDER