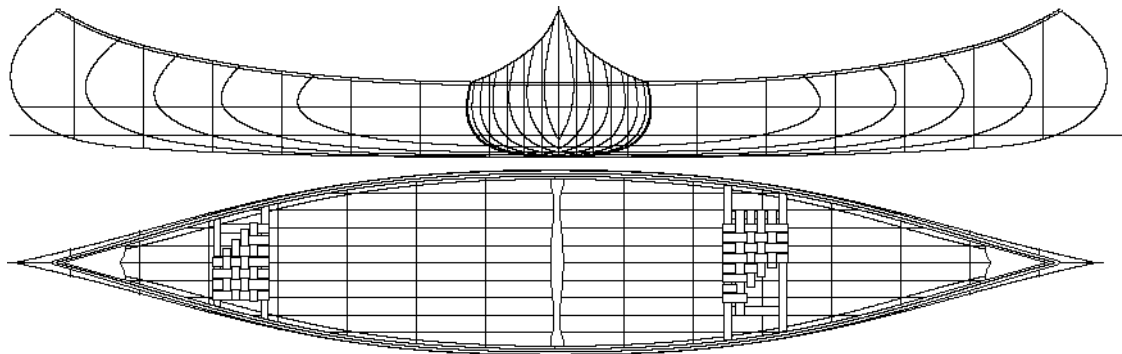


DESIGN BASED ON A 16' CEDAR/CANVAS CANOE BUILT BY THE PETERBOROUGH CANOE CO.

16' Champlain

Traditional Recreational Canoe



The Champlain High-ender, built by the Peterborough Canoe Company, was one of their most popular designs. Originally built in cedar/canvas, it appeared in their final catalogue of 1961. The Champlain Low-ender, with less height in the ends, was built on the same mold.

A good traditional style general purpose recreational canoe. Features a moderate displacement, soft bilge and moderate rocker - paddles well in the 'heeled over' position. Ideal for recreational paddling (solo or tandem) and light tripping.

SPECIFICATIONS

- Length 16'
- Maximum beam 32.5"
- Beam w/l 29.5"
- Beam gunnel 31.5"
- Bow height 26"
- Centre Depth 13.5"
- Draft 4"
- Displacement 325 lbs.
- Wetted surface 24.5 sq.ft.
- Weight to immerse 94 lb/in
- Prismatic coefficient 0.557
- Keel-less or shoe keel
- Weight 45 to 55 lbs.

© The Bear Mountain Boat Shop 1993
Drawn by Ted Moores, Aug. 1993
Redrawn by Steve Killing, 1999

PROFESSIONAL PLANS FOR THE CASUAL BUILDER