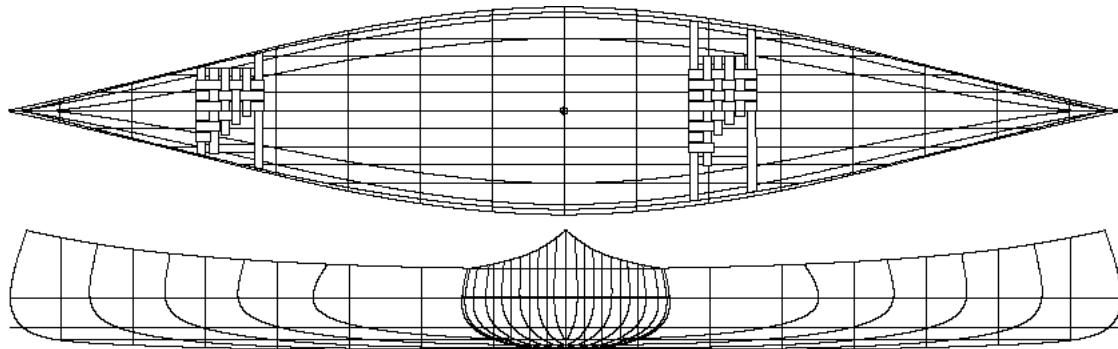


# 15"6" Cottage Cruising Canoe



The Canadian Canoe Company just north of Toronto spearheaded this project in 1997. They love traditional boats but wanted a midsize hull that had a little more capacity than the 15 footers. This new design quite obviously borrows some of its heritage from the Prospector series but is graced with a little more tumblehome in the hull sides and less curvature in the sheer. We think it is even better looking that the boats you remember as a kid.

Don't let the cottage reference fool you, this boat is happy playing near the beach, on portages or off on a two week canoe trip. It planks up beautifully and will make you look like a professional.

## SPECIFICATIONS

- Length 15'6.5"
- Maximum beam 35"
- Beam waterline 31.75"
- Bow height 20"
- Centre depth 13.5"
- Draft 4"
- Displacement 337 lbs.
- Wetted surface 22.85 sq.ft.
- Weight to immerse 132 lb/in
- Prismatic coefficient 0.525
- Weight 45 to 55 lbs.

©Steve Killing Yacht Design 1999

Designed by Steve Killing

for Ron Frenette, Canadian Canoes Ltd.1997