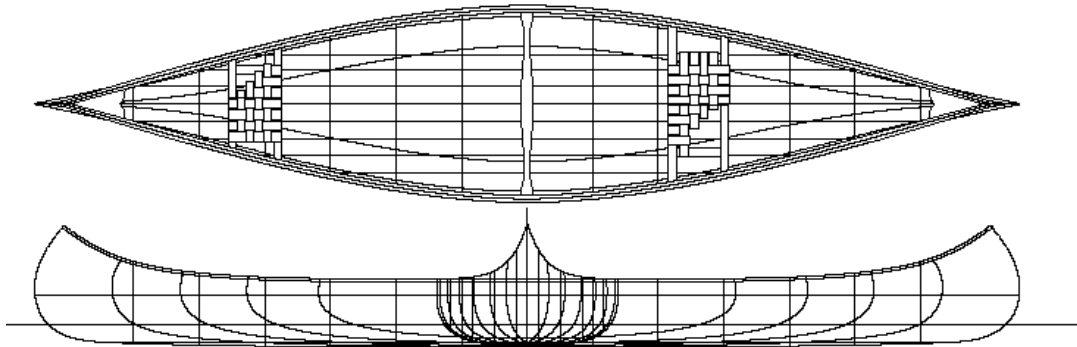


# 15' Hiawatha

## Recreational Canoe



This traditional looking Bear Mountain design has a sheer-line and bow profile reminiscent of the early 'Canadian' style canoe. Below the waterline, the hull is a more up-to-date shape for paddling efficiency. The hull is a shallow arch with a moderately flat keel-line that flows into a shallow vee to become a fine deep vee at the bow for directional stability, speed and maneuverability. The vee is carried as far back as possible, acting as a keel, it contributes to directional stability without sacrificing maneuverability.

The Hiawatha is a general purpose recreational canoe of light displacement, designed in the tradition of contemporary American cruisers, achieving its optimum waterline shape when paddled level, rather than heeled over. A good solo canoe, it is also very fast and responsive with a double blade paddle.

### SPECIFICATIONS

- Length 15'
- Maximum beam 33.5"
- Beam waterline 31"
- Beam gunnel 33.5"
- Bow height 21.5"
- Centre depth 12.25"
- Draft 4.25"
- Displacement 320 lbs.
- Wetted surface 24.2 sq.ft.
- Weight to immerse 115 lb/in
- Prismatic coefficient 0.525
- Weight 40 to 50 lbs.
- Keel-less or shoe keel

© The Bear Mountain Boat Shop 1993

Designed by Ted Moores 1986

Redrawn by Steve Killing, 1999