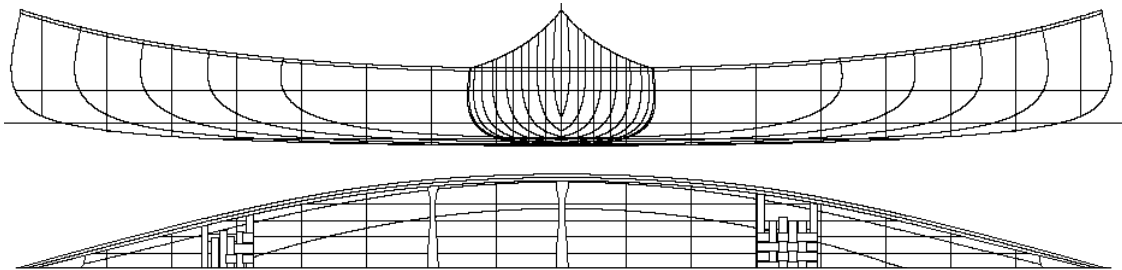


# Nomad 17s

## Prospector Type Traditional Recreational Canoe



### SPECIFICATIONS

- Length 17'
- Maximum beam 35"
- Beam w/l 32.6"
- Beam gunnel 34"
- Bow height 25"
- Centre Depth 14.5"
- Draft 4.5"
- Displacement 416 lbs.
- Wetted surface 28.6 sq.ft.
- Weight to immerse 169 lb/in
- Mom to trim 600 in-lb/in
- Prismatic coefficient 0.532
- Weight 55 to 65 lbs.

Designed for Ron Frenette, **Canadian Canoes Ltd.** by Ted Moores, Feb. 1994  
© The Bear Mountain Boat Shop 1995

*The Wilderness Nomad is built in cedar/canvas and wood strip/epoxy by Canadian Canoes, Brampton, Ontario*

Recognising the popularity of the classic 16' Chestnut Prospector 'Fort', Canadian Canoes commissioned Ted Moores to design a 17' tripping canoe which would be a kindred spirit to the 'Fort'. The mid section and profile are similar to our 16' Prospector but with much of the hollow in the waterlines removed. This uninterrupted direction of water flow allows the canoe to move through the water with the least amount of resistance. It adds some fullness (lift) to the hull below the waterline as well as being a very easy shape to plank.

A new wood canvas form was constructed in March of 1994 from the Moores' design and a number of Wilderness Nomad's are now in service. The design is so successful that Ron Frenette decided we should make this craft available using the Bear Mountain wood/epoxy strip building technique. The Nomad-S is long, sleek, easy to plank and easier to paddle.