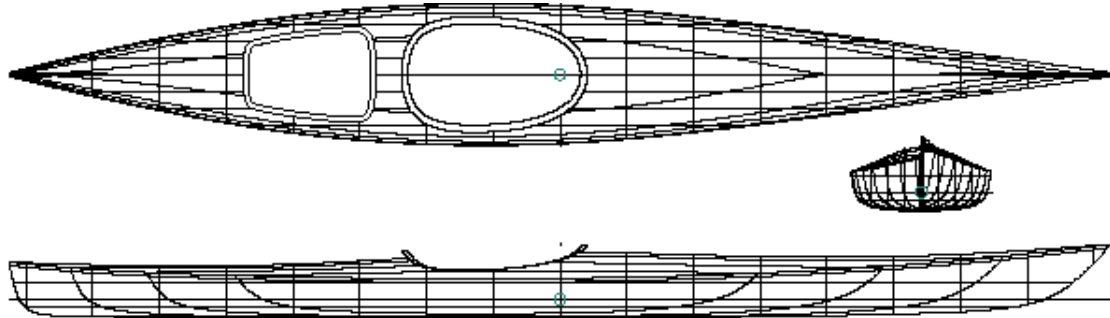


## SPECIFICATIONS

- Length 16'6"
- Maximum beam 25.5"
- Beam waterline 24"
- Beam gunnel 25.5"
- Bow height 13.5"
- Centre depth 7"
- Draft 3.5"
- Displacement 260 lbs.
- Wetted surface 22.2 sq. ft.
- Weight to immerse 102 lb/in.
- Prismatic coefficient 0.569
- Weight 45 to 50 lbs
- Cockpit opening 30.5" x 18"

## Resolute 16'6" Touring Kayak



Developed in response to requests from heavier and wider paddlers who also wanted a shorter boat, this stable load carrier is excellent for the novice kayaker. It will inspire confidence and lead to a continuing enjoyment of the sport. Like the 14 footer, the rocker has been reduced aft to aid in tracking ability. The beam is ample at 25.4" and the cockpit has been widened to match. The hull is a very shallow vee, the flattest of the hulls shown here to permit the width for stability and yet maintain a moderate displacement. A maximum beam of 25.4" compared with the 17 footer at 23.5" is more stable and has good load capacity. Average load is 260 lbs. but it can handle up to 340 lbs. without a problem.

© Designed by Steve Killing  
Steve Killing Yacht Design Inc.  
P.O. Box 755  
Midland, Ontario L4R 4P4